



magis40

Create,  
design,  
deliver.

# symposium magis40

The great Architect Hundertwasser in the manifesto «**La Dictature des fenêtres et le droit de fenêtre**» wrote that houses are not made of walls but of windows.  
«Les uns prétendent que les maisons se composent de murs. Moi, je dis que les maisons se composent de fenêtres».

When I first saw magis40, the sentence by Hundertwasser immediately sprang to mind.

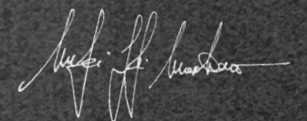
For the first time, after 30 years of designing, observing and studying windows and the way they are displayed at showrooms, I didn't see a window but a wall to be designed, where I could move freely to create, without that disturbance that has always led to compromise in a good furnishing project.

magis40 allows for democratic design of verticalisation of the wall, something that hitherto was not made possible by interior design, calling for obligatory "sealing" with arrogant and bullying windows.

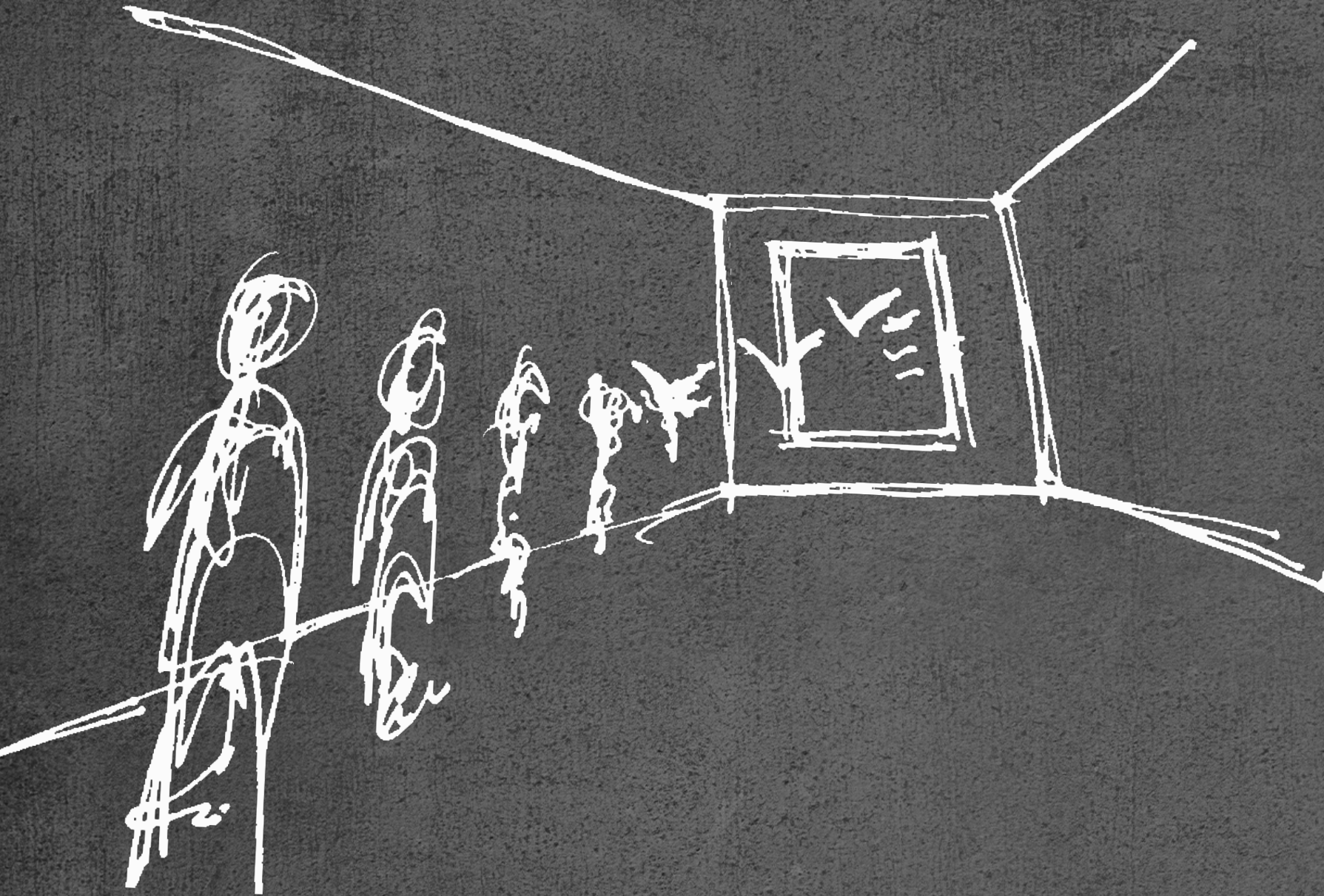
magis40 has knocked down the wall of arrogance in window frames, it has provided the freedom to design beyond light and for light, channelling light itself and making it the key player in interior design.

magis40 allows the designer to play on full and empty, deciding whether to turn the window into the main player or an extra.

The strong ability to combine materials of magis40 and its great technical performance are a winning combination, one of its kind.



Giorgio Massimiliano Marchesi  
Art Director







# Universal Stroi Consult LTD

Our goal is to deliver high quality, individual and aesthetic products

The company was established in 1994.

The two core fields of activity are construction of buildings and manufacturing of doors and windows.

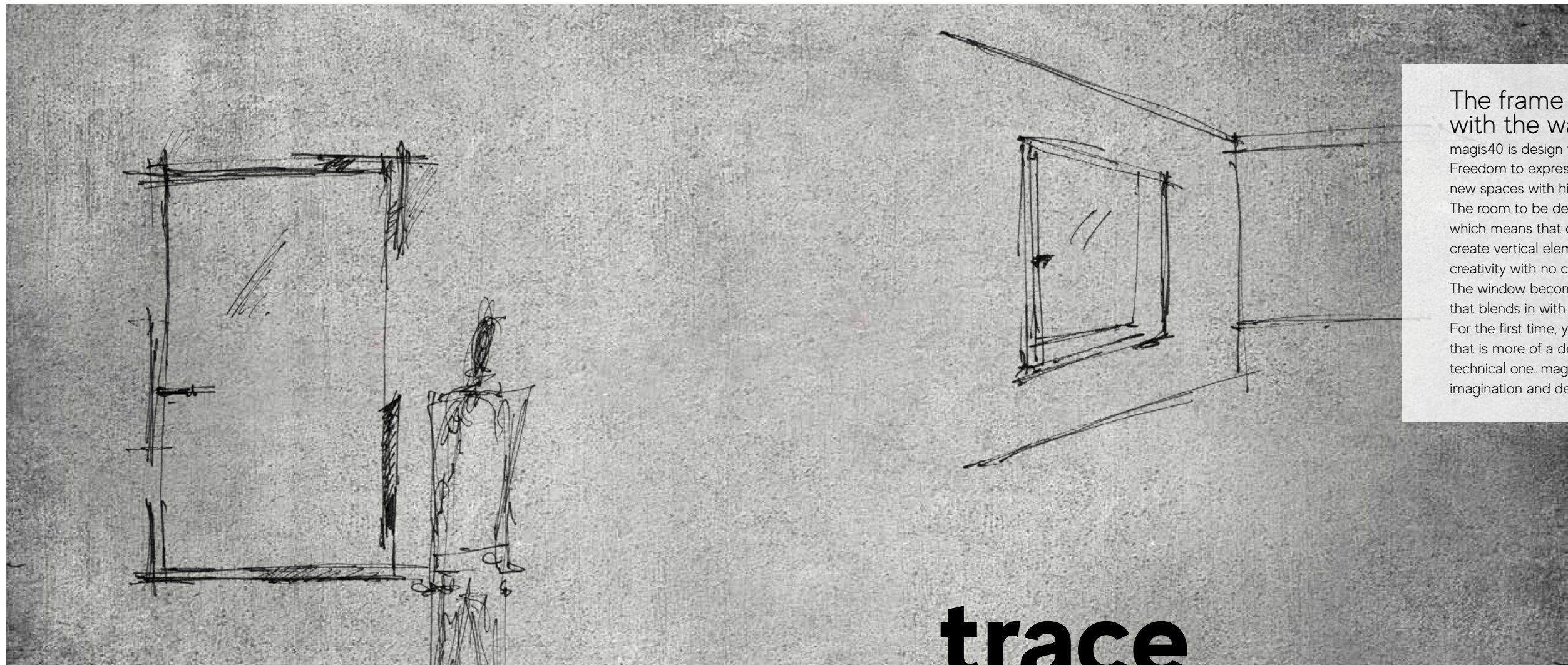
The production facilities are located on 10.000 m<sup>2</sup> out of which 3600 m<sup>2</sup> are covered production premises and offices.

Windows and doors production is certified and audited according to ISO 9001:2015 Quality Management System, ISO 14001:2015 on Environmental Management Systems and ISO 45001:2015 on Health and Safety Management at work.



Management  
System  
ISO 9001:2015  
ISO 14001:2015  
OHSAS 18001:2007  
  
www.tuv.com  
ID 9105022124





## The frame flush with the wall

magis40 is design freedom.

Freedom to express yourself and create new spaces with high living comfort.

The room to be designed is not perturbed, which means that designers can freely create vertical elements, expressing their creativity with no constraints.

The window becomes a fluid, subtle object that blends in with the home decor.

For the first time, you can choose a window that is more of a design element than a technical one. magis40 leaves room for imagination and design.

# trace

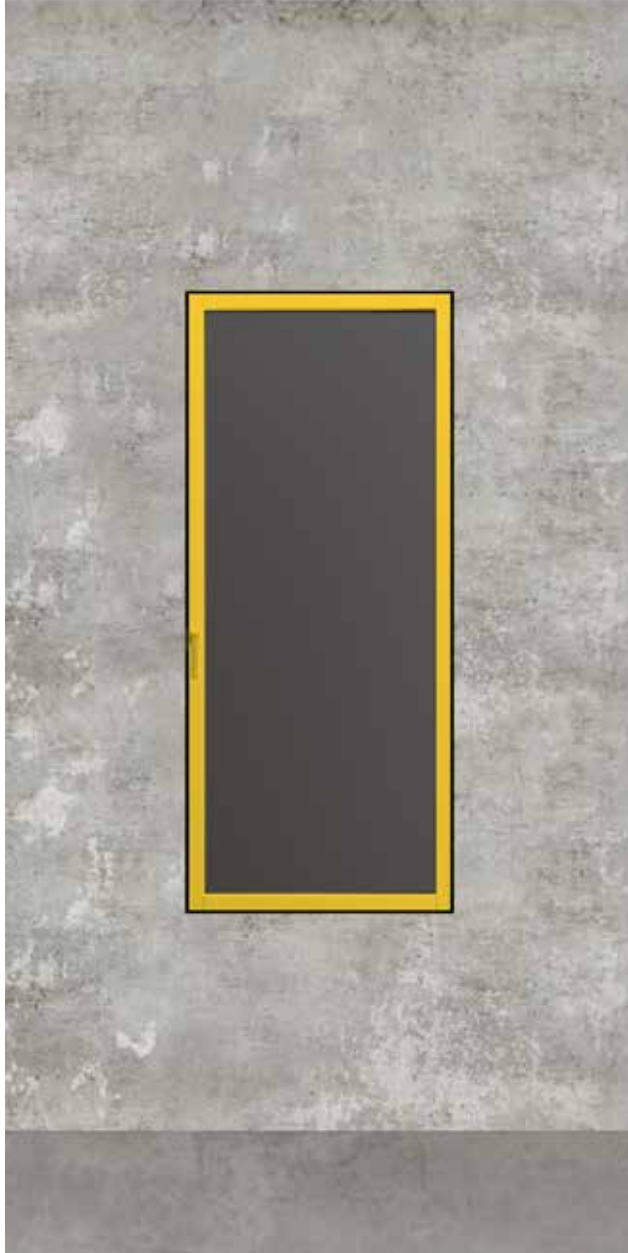
the simplicity of design finds its line





# synthesis

an extremely thin window



**UNIVERSAL°**  
STROI CONSULT

## Minimal

With magis40, extreme, slim and elegant design in your toolbox.

Synthesis is at the heart of this line.

Renewed simplicity and functionality that evolve through the pursuit of clean, minimalist shapes combined with the rational use of natural raw materials.

Larger glazed surface, smaller wood section: light is the real star.



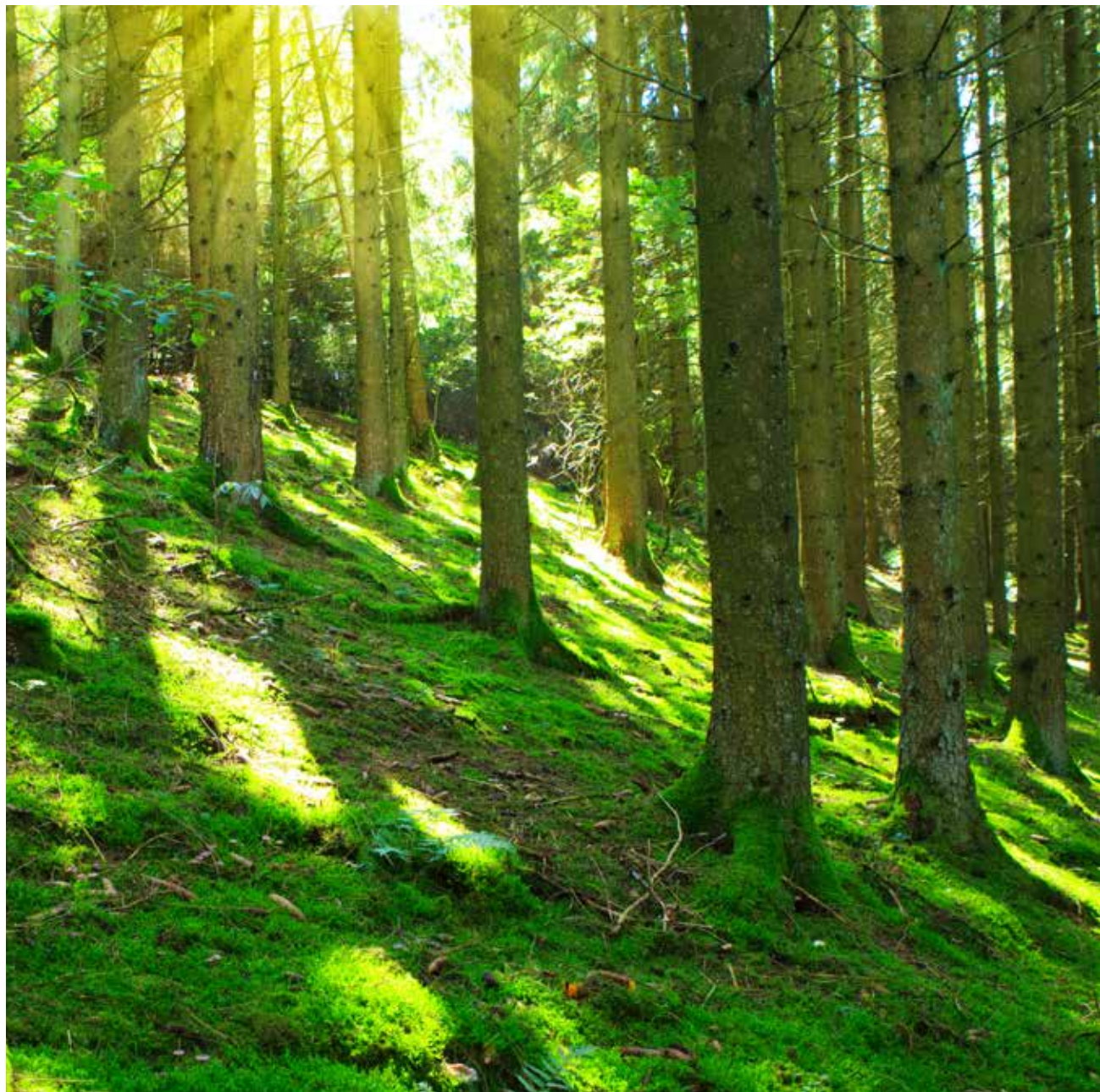


# outfit

a customised,  
original look

With magis40, the outfit concept enters the world of windows. magis40 is a concept that stimulates the creativity of designers and window and door manufacturers. A skilful, sophisticated mix that leaves plenty of freedom to interpret, experience and decorate windows with accessories and combinations to suit your style. We have designed our look down to the smallest detail, you can create your favourite outfit.





the perfect combination

# harmony

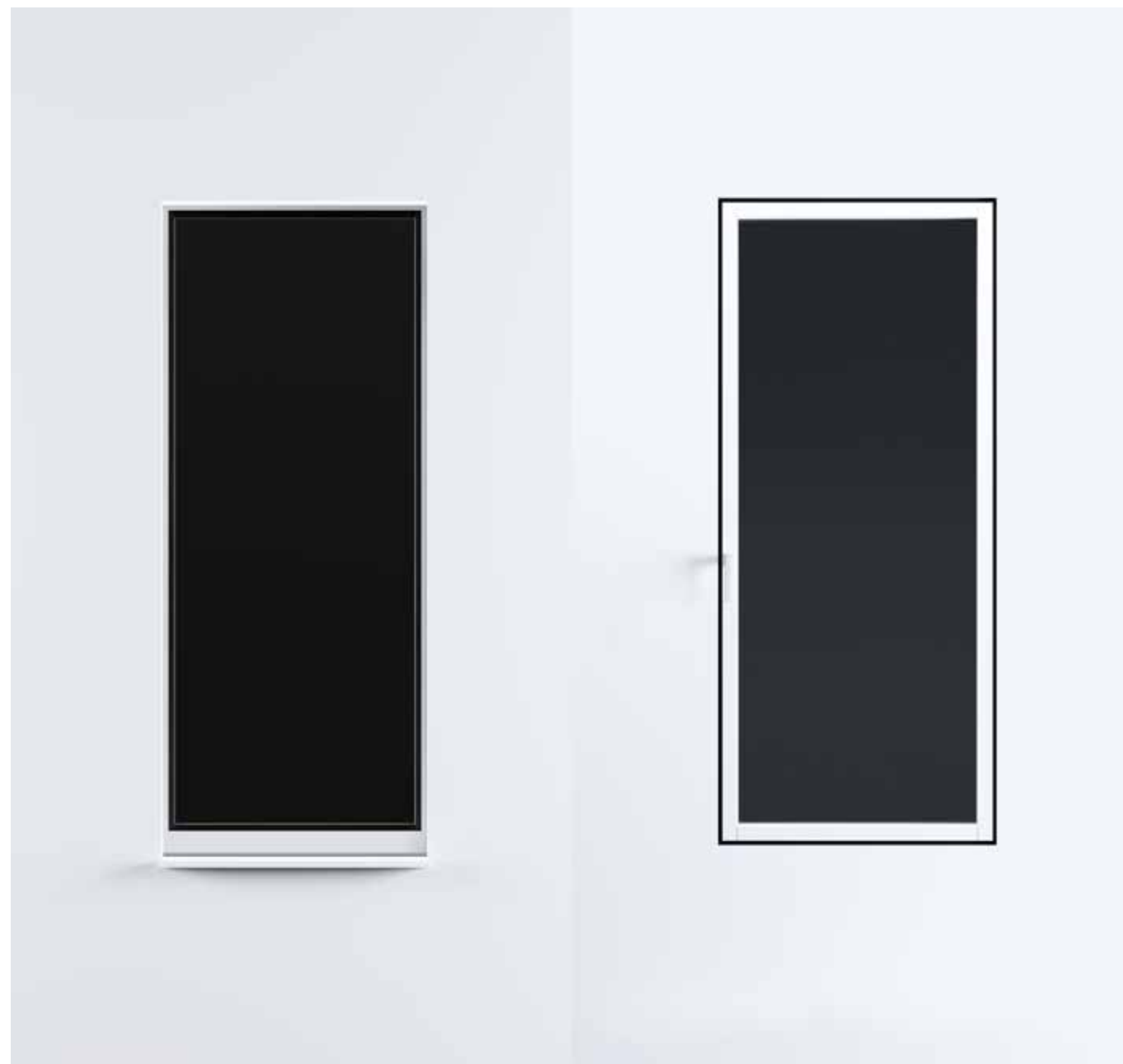


## Wood - Aluminium

magis40 has a wooden frame inside, to offer the excellence of nature and, outside, it comes with a protective aluminium shield so as to avoid any kind of maintenance.  
A range of windows that remain unchanged over time, both in terms of aesthetics and functionality.







OUTSIDE VIEW

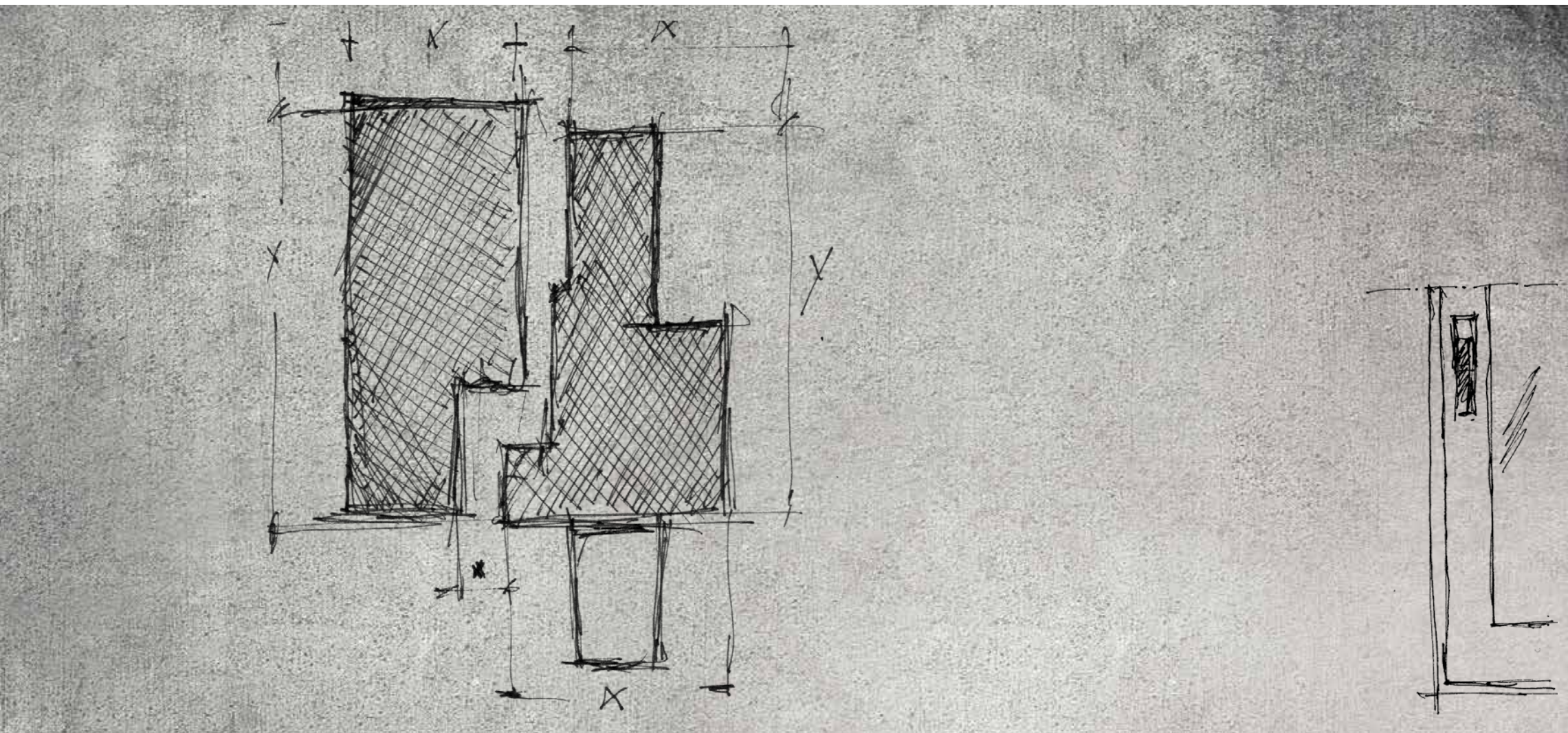
INSIDE VIEW

Excellent air permeability / water  
tightness / resistance to wind load

The performance requirements achieved mark an important  
milestone for minimal windows.

The magis40 window offers the option of inserting different types  
of glass with different thicknesses, as well as certified installation.

an unprecedented technological challenge  
**performance**



a range of international profiles

# solutions

The magis40 programme is highly versatile  
and is available with different types of opening:  
open-in / lift-&-slide / open-out

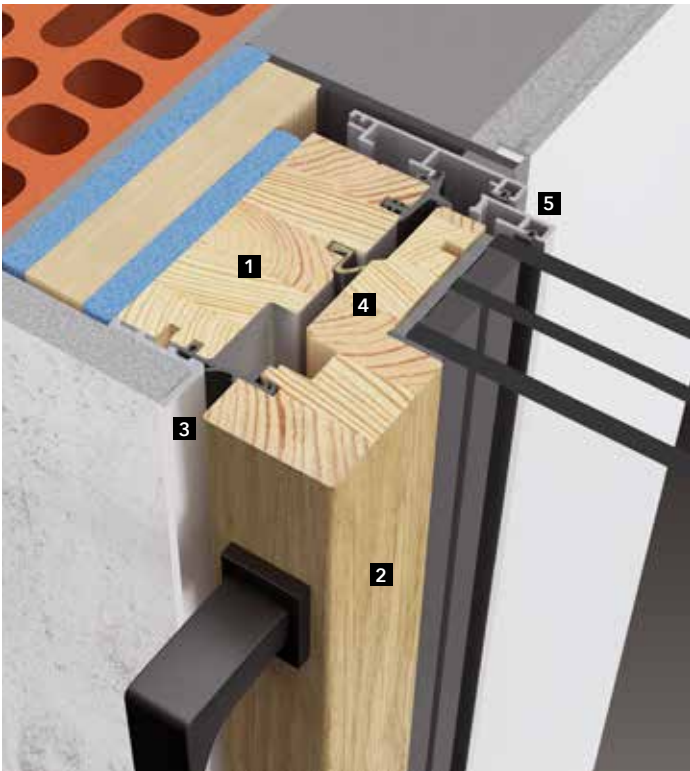




open-in model, extreme in size

# magis40

The latest addition to the uni\_one systems, it combines all the features of revolutionary technology in an absolutely trendy window. The exclusive concealed locking system of the fixed elements and the lack of rabbets in the sash, which are both patented elements, highlight the high-tech features of the system for magis40 windows.



- 1 glued laminated timber
- 2 oak veneer finish
- 3 aluminium flush profile for the installation to the wall
- 4 sash profile without rabbet
- 5 aluminium external frames

uni\_one  
magis40



Material		Wood-Aluminium
Thermal insulation		Uw= 1,1 W/m²K
Insulating glass		Double glazing thickness 33mm
Thermal insulation		Uw= 0,71 W/m²K
Insulating glass		Triple glazing thickness 48mm
Thermal insulation		Uw= 0,99 W/m²K
Insulating glass		Triple glazing thickness 48mm
Acoustic insulation		Rw up to 43 dB
Security hardware		Up to RC2

magis40 - 48mm glass  
SOFT WOOD  
Uf=0,96 W/m²K

Ug W/m²K		Uw W/m²K
0,5	->	0,71
0,6	->	0,78
0,7	->	0,86
0,8	->	0,94
0,9	->	1,0
1,0	->	1,1
1,1	->	1,2

DOUBLE GLAZING Uw=1,1 W/m²K

TRIPLE GLAZING Uw=0,71 W/m²K

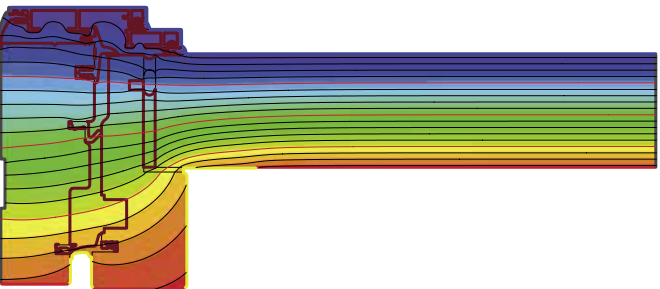
Dimensions in mm.	
Thickness of sash	110,5 x 40mm
Thickness of frame	118,5 x 40mm
Visible section sash + frame	79mm
Visible section middle clamp	89,5mm

Air permeability		CLASS 4
Water tightness		CLASS E1350
Wind load resistance		CLASS C5

The thermal transmittance values are calculated according to UNI EN 10077/1-2018, UNI EN 10077/2-2018, UNI EN 10456-2008, UNI EN 673-2011 standards, in reference to a window with 1 sash BxH (1500x1500mm,  $\psi_g=0,04$  W/mK)

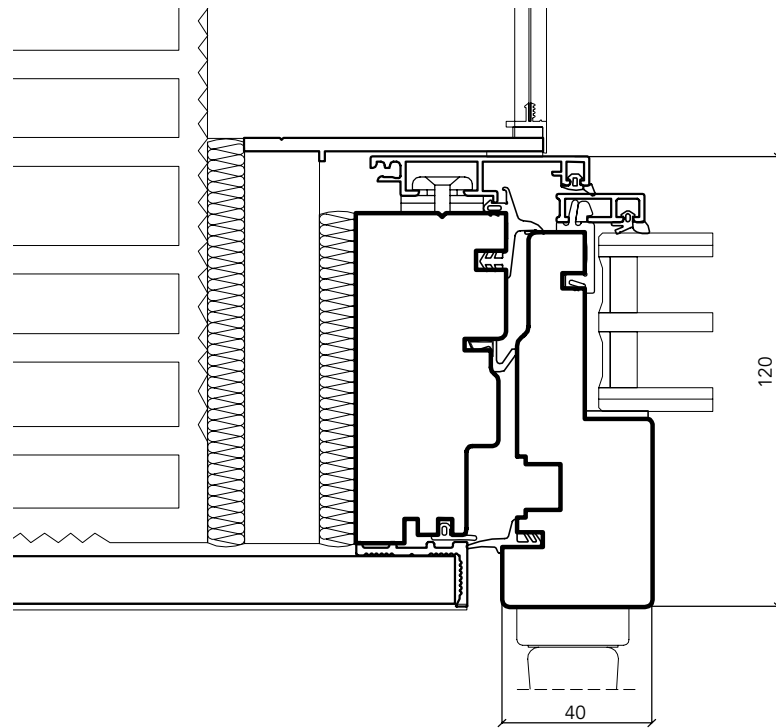
The air-water-wind tightness performances are certified in reference to a window with 2 sashes WxH (1500x1500mm)

The acoustic insulation values are certified in reference to a window with 2 sashes WxH (1300x1500mm)



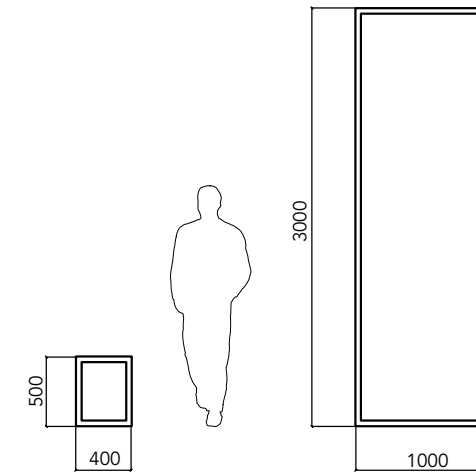
technical section

# magis 40



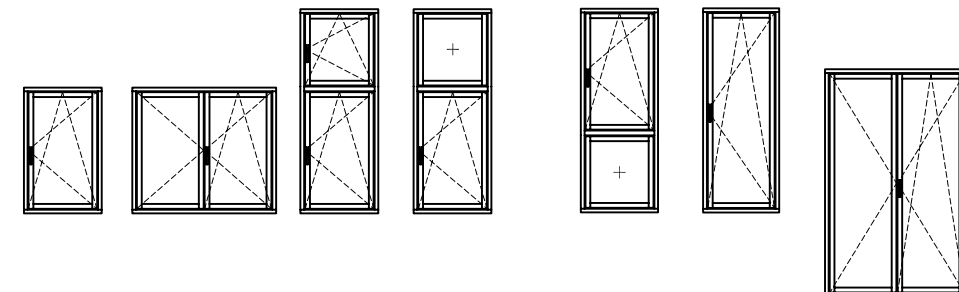
## consistency measurements

the consistency measurements are approximate and vary depending on the glass and hardware used



## types

some examples of possible configurations





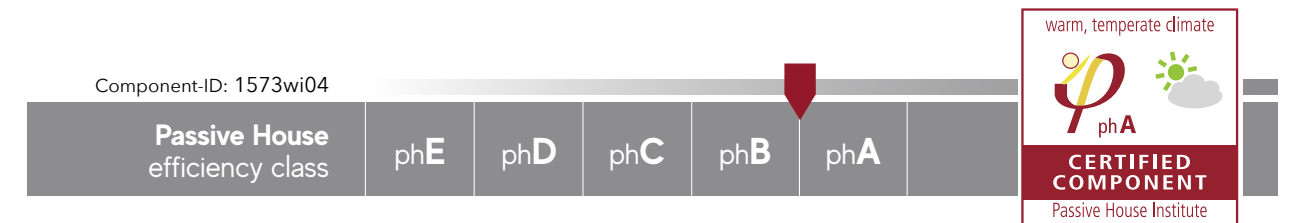
*"Congratulations !*

*You are the first  
manufacturer to achieve  
phA-efficiency class for  
the warm, temperate  
climate zone"*

*Technical Dept.  
Passive House institute*



THE  
MAGIS40  
WINDOW,  
OF THE  
UNI\_ONE  
SYSTEM  
by UNIFORM,  
IS THE FIRST  
WINDOW EVER  
TO ACHIEVE  
phA-EFFICIENCY  
CLASS IN  
CLIMATE ZONE 4

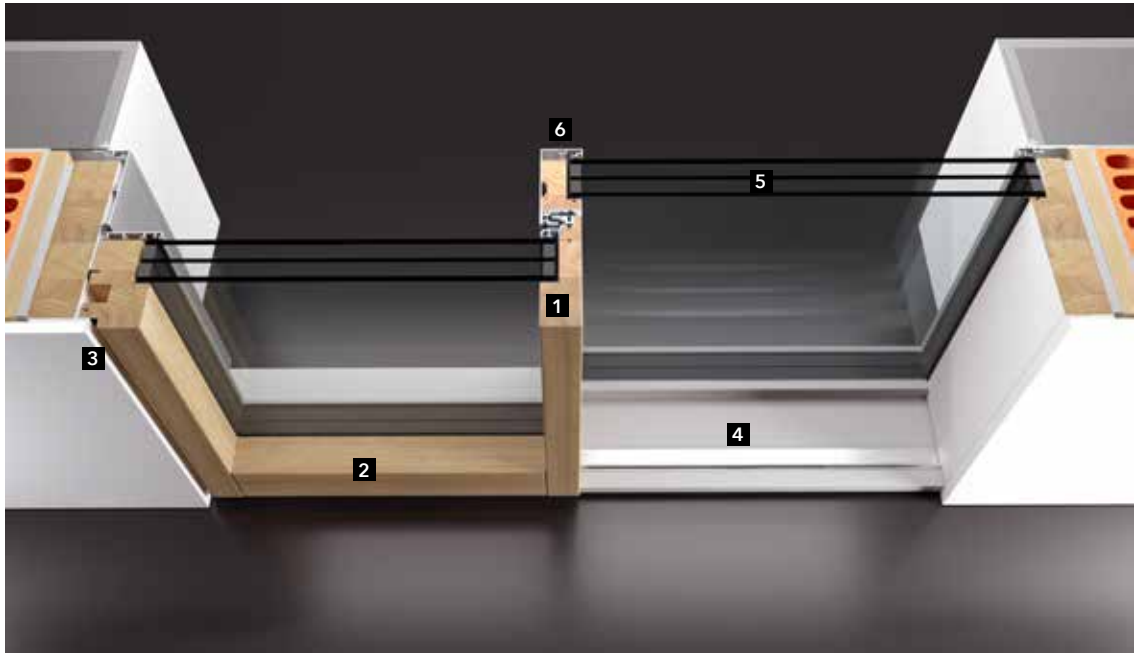


excellent living comfort  
**passive window**

lift and slide model, technological elegance in motion

# HS-magis40

One of a kind, the HS-magis40 is the lift and slide system that completes the minimalist line of the magis40. The HS-magis40 Uniform Kit, as with the casement one with the same name, makes it possible to install a window with an exposed section of the sash of only 40mm and a concealed frame flush with the wall.



- 1

glued laminated timber
- 2

oak veneer finish
- 3

profile for flush-wall installation
- 4

fibreglass floor sill
- 5

fixed glass concealed in the frame
- 6





aluminium external frames

uni\_one<sup>...</sup>

HS-magis40

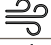



LIFT  
& SLIDE

Material		Wood-Aluminium
----------	---	----------------

Thermal insulation		Uw= 1,3 W/m²K		Uw= 0,85 W/m²K
Insulating glass		Double glazing thickness 32mm		Triple glazing thickness 52mm

Acoustic insulation		Rw 38 dB
---------------------	---	----------

Security hardware		Up to RC2
-------------------	---	-----------

Air permeability		CLASS 4
Water tightness		CLASS 9A
Wind load resistance		CLASS C4/B5
Wind load resistance for heights >=2,4m		CLASS C1/B2

The thermal transmittance values are calculated according to UNI EN 10077/1-2018, UNI EN 10077/2-2018, UNI EN 10456-2008, UNI EN 673-2011 standards, in reference to a lift-sliding door  
Plan A - WxH (2800x2400mm,  $\psi_g$ = 0,04 W/mK)

The air-water-wind tightness performances are certified in reference to a lift-sliding door  
Plan A - WxH (2800x2400mm)

Wind load resistance for certified height >=2,4m in reference to a lift-sliding door  
Plan A - WxH (4000x3200mm)

Certified acoustic insulation in reference to a lift-sliding door  
Plan A - WxH (3560x2960mm)  
double glazing with  $R_w$ = 44 (-2;-7) dB

DOUBLE GLAZING **Uw=1,3 W/m²K**

TRIPLE GLAZING **Uw=0,85 W/m²K**

## HS-MAGIS40 - 32mm glass SOFT WOOD

Ug W/m²K		Uw W/m²K
1,0	->	1,3
1,1	->	1,4
1,2	->	1,5
1,3	->	1,6
1,4	->	1,7
1,5	->	1,8
1,6	->	1,8

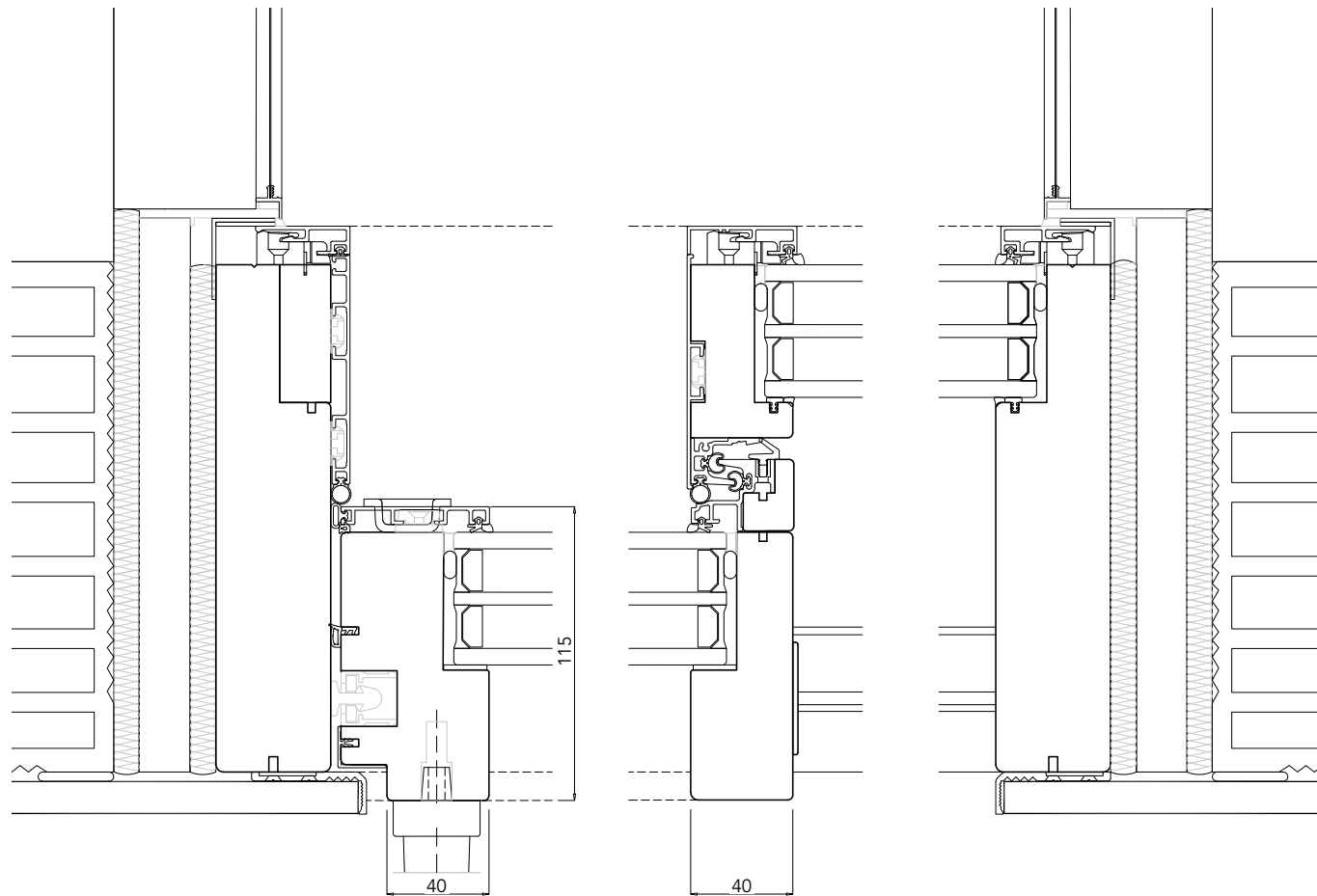
## HS-MAGIS40 - 52mm glass SOFT WOOD

Ug W/m²K		Uw W/m²K
0,5	->	0,85
0,6	->	0,95
0,7	->	1,0
0,8	->	1,1
0,9	->	1,2
1,0	->	1,3
1,1	->	1,4



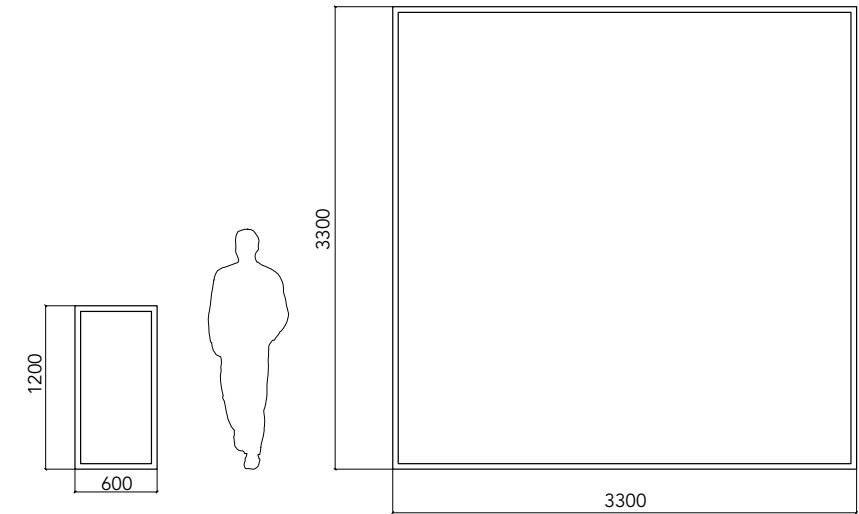
technical section

# HS-magis40



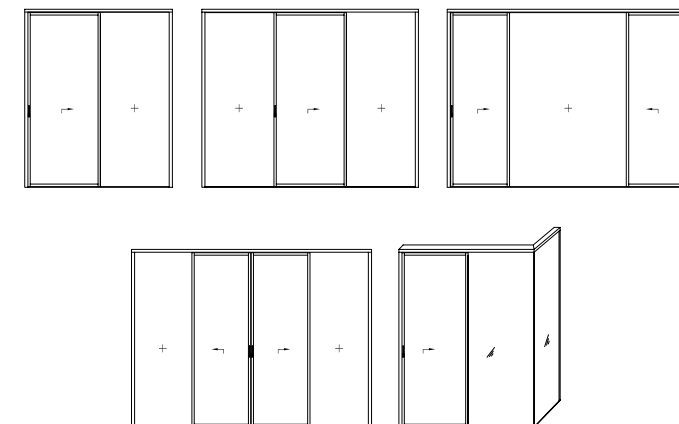
## consistency measurements for openable sashes

the consistency measurements are approximate and vary depending on the glass and hardware used



## types

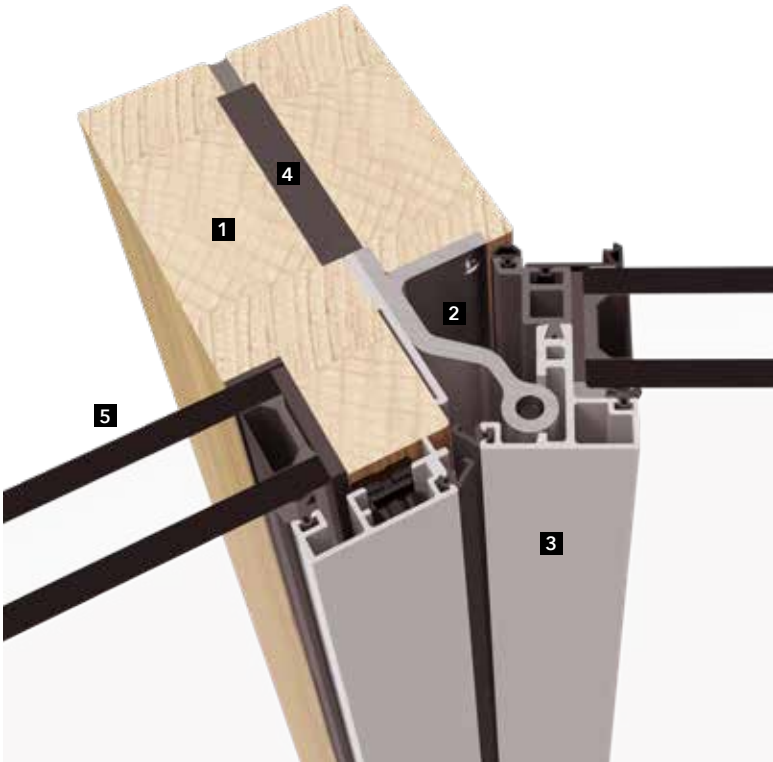
some examples of possible configurations



light, a key feature

# format38

format38 introduces the concept of total overlap between the sash and frame to reduce the exposed section of both the wood inside and aluminium outside to just 38mm. This ensures 30% more light in the house, which translates into renewed spaces and improved quality of life.



- 1 glued laminated timber
- 2 concealed hinge in the sash profile
- 3 external aluminium profile
- 4 steel reinforcement
- 5 double and triple glazing

uni\_one  
format38



Material		Wood-Aluminium
Thermal insulation		Uw= 1,3 W/m²K
Insulating glass		Double glazing thickness 31-37mm
Thermal insulation		Uw= 0,85 W/m²K
Insulating glass		Triple glazing thickness 41,5-47mm
Acoustic insulation		Rw up to 42 dB
Security hardware		RC2N

format38 - 41,5-47mm glass SOFT WOOD		
Ug W/m²K		Uw W/m²K
0,5	->	0,85
0,6	->	0,91
0,7	->	1,0
0,8	->	1,1
0,9	->	1,2
1,0	->	1,3
1,1	->	1,4

DOUBLE GLAZING Uw=1,3 W/m²K

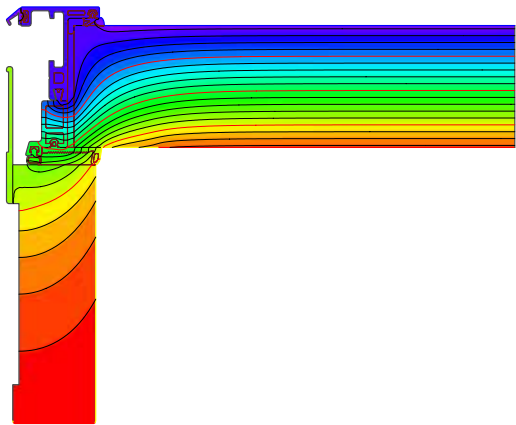
TRIPLE GLAZING Uw=0,85 W/m²K

Dimensions in mm.		
Overall dimensions	40 x 161mm	
Visible section	40mm	
Air permeability		CLASS 4
Water tightness		CLASS E1200
Wind load resistance		CLASS C4

The thermal transmittance values are calculated according to UNI EN 10077/1-2018, UNI EN 10077/2-2018, UNI EN 10456-2008, UNI EN 673-2011 standards, in reference to a window with 1 sash WxH (1200x1400mm, ψg= 0,04 W/mK)

The air-water-wind tightness performances are certified in reference to a window with 1 sash WxH (1000x2440mm)

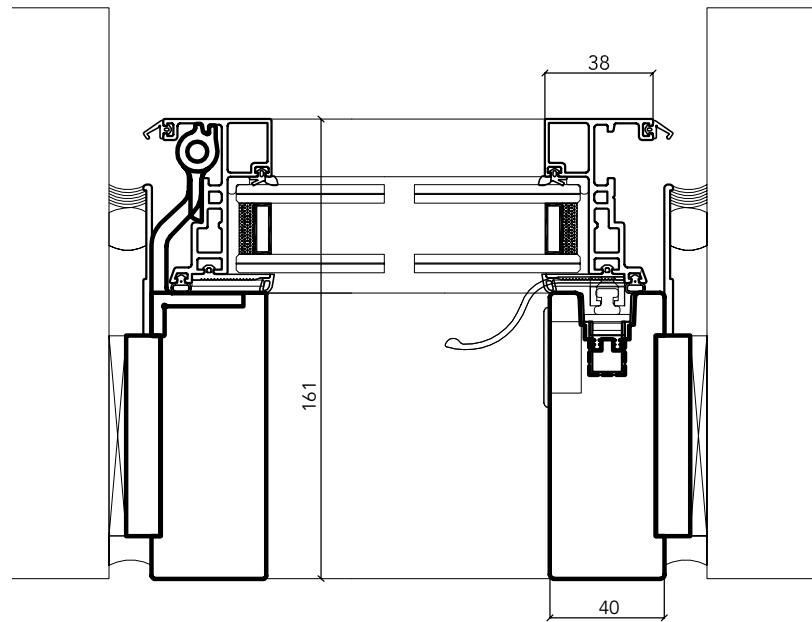
The acoustic insulation values are certified in reference to a window with 1 sash WxH (1200x1400mm)





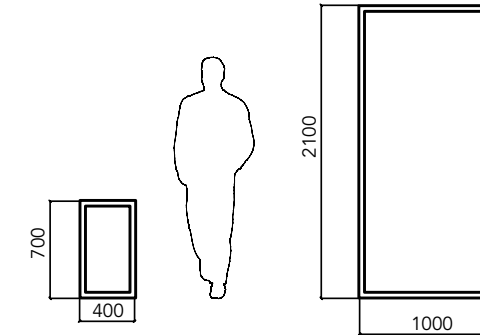
technical section

# format38



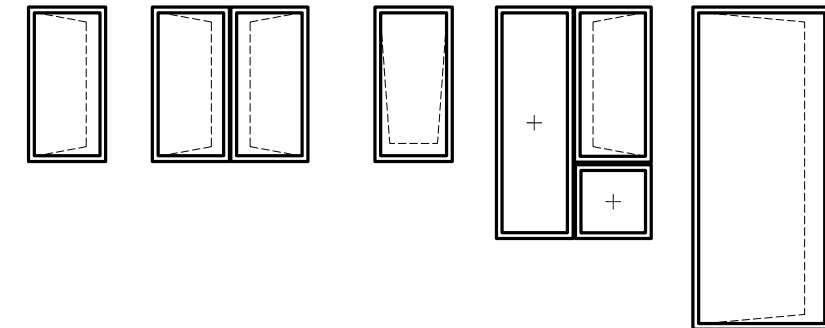
## consistency measurements

the consistency measurements are approximate and vary depending on the glass and hardware used



## types

some examples of possible configurations (top-hung / side-hung)



# the world's slimmest wood-aluminium window showroom

Innovation is beautiful on the outside and beautiful on the inside.  
Check with your own eyes the quality of Universal Stroi Consult windows.  
Discover the beauty of innovation.



Head office: **cty Blagoevgrad, P.C. 2700,  
str. Ivan Garvanov № 1-B – Bulgaria**

Factory: **cty Blagoevgrad, P.C. 2700,  
str. "Pokrovnishko shose" № 20 – Bulgaria**

Ph: **+359 73 831907**

Mob: **+359 886 848 018**

Mob: **+359 886 848 818**

**sales@universal-stroi.com**

**usk.ood@gmail.com**

<https://products.universal-stroi.com>

Watch the video and discover the cutting-edge  
technology to revolutionise windows.







details  
are not  
for everyone

# handles

For the exclusive magis40 program by uni\_one technology, in partnership with “Colombo Design”, we have selected a handle with high technical and aesthetic performance: the magis40 and HS-magis40 DK Zero handle.

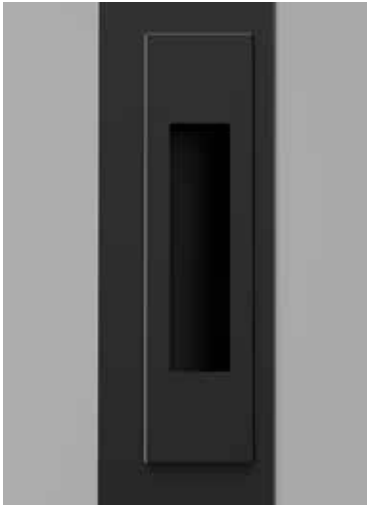
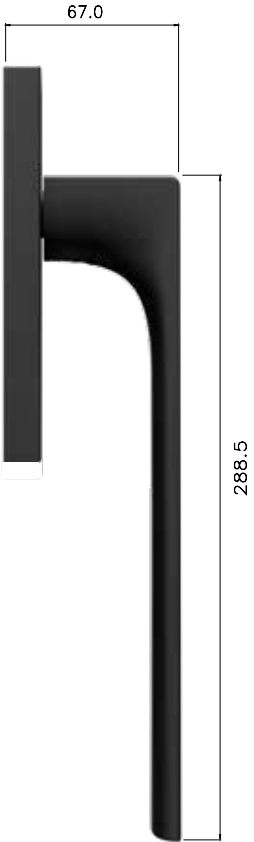
An innovative product with a distinctive stylistic signature style, where the almost total absence of space taken up by the washer further enhances the design of the window, actuated by a micro-movement that keeps the functional and usage characteristics unaltered.



magis40 DK Zero



HS-magis40 DK Zero



# magis40

Produced with:  
**uni\_one**  
TECHNOLOGY



Head office: **cty Blagoevgrad, P.C. 2700,**  
**str. Ivan Garvanov № 1-B – Bulgaria**

Factory: **cty Blagoevgrad, P.C. 2700,**  
**str. "Pokrovnishko shose" № 20 – Bulgaria**

Ph: **+359 73 831907**

Mob: **+359 886 848 018**

Mob: **+359 886 848 818**

**sales@universal-stroi.com**

**usk.ood@gmail.com**

**<https://products.universal-stroi.com>**



**[www.sistema-uni-one.it](http://www.sistema-uni-one.it)**